

# FOR SALE

## Highly Visible Commercial Investment Property

**ZONED COMMERCIAL**  
718 N. Cole Road, Boise

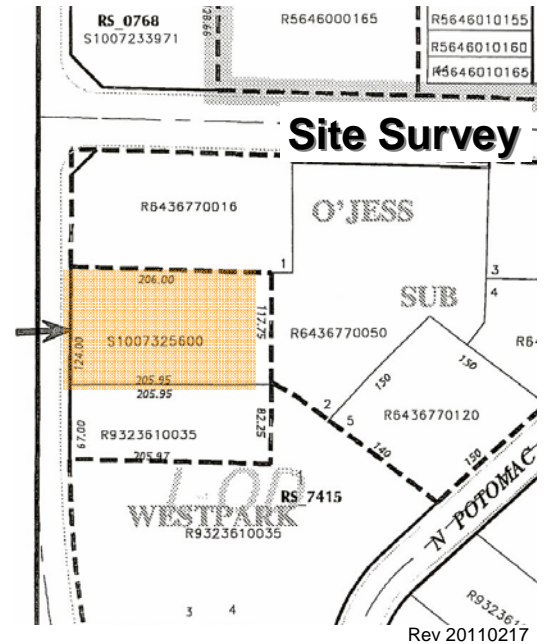
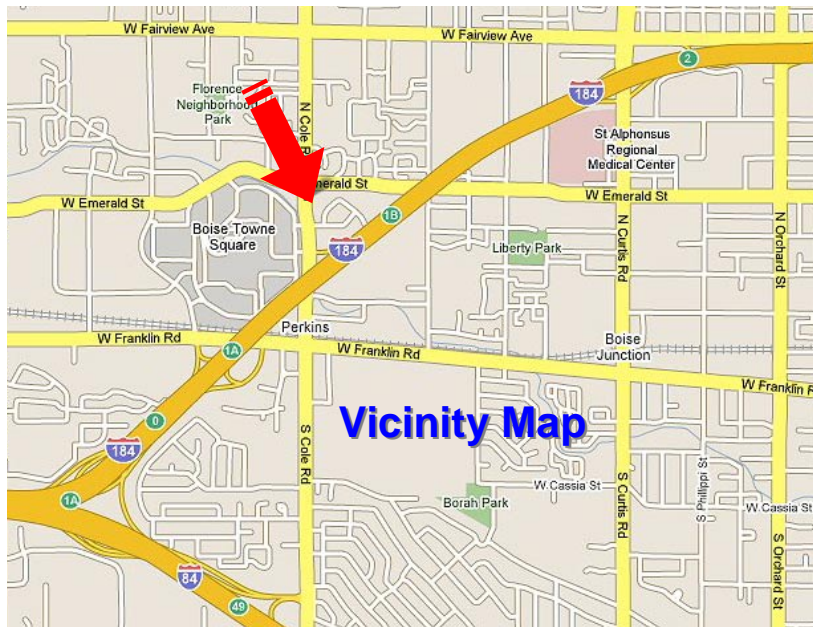
**SALE PRICE**  
\$300,000 (\$12.08 PSF)

**LAND SIZE**  
.57 Acres (24,829 SF)

**BUILDING SIZE**  
2,142 SF

**Investment Real Estate  
with Development Potential**

**COMMENTS**  
Highly visible location on North Cole Road directly across the street from Boise Towne Square



### ARTHUR BERRY & COMPANY

Commercial Real Estate Division  
960 Broadway Avenue, Suite 450  
Boise, Idaho 83706  
Tel 208-336-8000 Fax 208-345-0609

For more information visit [www.arthurberry.com](http://www.arthurberry.com) or contact:

ART BERRY 208-336-8000

Email: [arthurberry@arthurberry.com](mailto:arthurberry@arthurberry.com)

TO RECEIVE FURTHER INFORMATION, sign and return the Confidentiality Agreement/Agency Representation found on our web site at [www.arthurberry.com](http://www.arthurberry.com). The listing agent, ART BERRY, will then contact you. If you prefer, this agreement can also be requested by contacting us at 208-336-8000. The information above has been provided by the seller. Arthur Berry & Company makes no representation as to its reliability. Price and terms subject to change at seller's discretion.